



## A New Pathway for Northern British Columbia

Set in Pouce Coupe and developed in partnership with **North Wind Wellness Centre**, the **Addiction Recovery Community Housing (ARCH)** model brings together early recovery housing with withdrawal management, treatment housing, recovery supportive housing, and long term recovery supports within a single, integrated environment. It is the first model of its kind in Canada to unite this full continuum – grounded in both Indigenous cultural practices and Western clinical care.

## ARCH: Bringing Addiction Recovery Supports Under One Roof

In northern British Columbia, recovery has too often required leaving home.

For many Indigenous individuals, accessing treatment has meant travelling far from community – away from family, culture, and support systems at the very moment they are needed most. People move through withdrawal management, wait for treatment, complete programs, and then face

the uncertainty of what comes next, often without stable housing or continuity in care. The system exists, but it rarely holds together. ARCH was designed to change that.

Rather than asking people to navigate a disjointed system of separate services, ARCH brings the system into one place and ensures smooth transitions, so individuals do not fall out of care.

## Building a blueprint for system change

Streethome Foundation led the development of the project's business case, aligning partners across sectors to transform longstanding system gaps into an operational, fundable, and replicable model. This approach brought government, service providers, and community stakeholders into alignment, strengthening coordination and implementation.



Spring 2023  
Planning Process

Winter 2023  
Blueprint Permit Application

Spring 2025  
Construction Began

Fall 2026  
Expected Completion



## Inside the Model: A Conversation with Isaac Hernandez

For Isaac Hernandez, Executive Director of North Wind Wellness Centre, the need for this model has long been evident – not because services don't exist, but because they rarely ensure continuity of care.

**“The gap isn't in what exists, but in how it all connects.”**

ARCH is structured as a progression of stability. Individuals enter early recovery housing where they can access withdrawal management, transition into a 12 week treatment program, and then move into longer term supportive housing as they rebuild their lives.

At the centre of it all is the Recovery Community Centre – a space that sustains connection throughout the entire journey.



Over time, it became clear this wasn't just possible – it was necessary.



## Designing for Reality: Mukhtar Latif on Building ARCH



Development Consultant Mukhtar Latif approached ARCH not as a traditional capital project, but as a system that needed to unfold over time.

**“The design had to reflect a fully integrated recovery pathway.”**

Foundational issues – land use, zoning, approvals – were resolved early, while the design evolved through consultation with partners. This approach allowed each component of the campus to be sequenced intentionally, ensuring that construction methodologies were optimized for purpose, cost, and speed.

**“**We built ARCH to demonstrate that integrated recovery isn't just possible – it's buildable, scalable, and achievable. It took persistence and a strong narrative addressing local, provincial, and federal needs to attract the support required.**”**

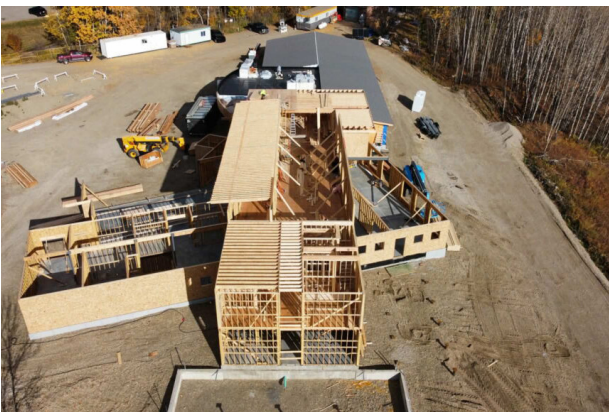
## Sustaining Recovery: Liz Flores on Community and Connection

Liz Flores, who oversees the new Recovery Community Centre, ensures that ARCH meets clinical and regulatory standards while preserving the integrity of its integrated approach.

**“**Peer support doesn't replace clinical care – it strengthens it.**”**

**“The Recovery Community Centre is the connective tissue of the model.”**

The Centre blends Indigenous cultural programming – including ceremonies, teachings, and land based practices – with peer led support, system navigation, and wellness workshops. It is designed to keep individuals grounded in culture, community, and recovery at every stage.



# THE COMPLETE ADDICTION TREATMENT AND RECOVERY PATH

**1. Early Recovery Housing** Provides living spaces for people waitlisted for Addiction Treatment Housing. Withdrawal management, structured programs, recreational and social activities are coordinated to ensure individual engagement and connection are maintained until the individual moves into Addiction Treatment Housing.

**2. Addiction Treatment Housing** is a 12-week program that includes: Western Medicine and Traditional Healing; addiction rehabilitation treatment often based on the therapeutic community approach; physical activity and vocational training. It is culturally safe, safe, spiritually respectful, and trauma, violence, and gender-informed.

START:  
ADDICTION  
TREATMENT  
PATH



## 1. EARLY RECOVERY HOUSING



## 2. ADDICTION TREATMENT HOUSING (ATH)

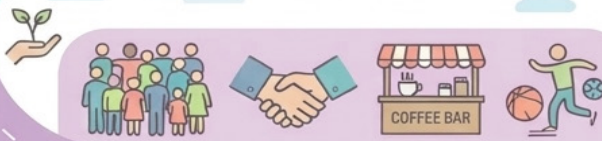
12-WEEK PROGRAM

**3. Recovery Supportive Housing** Provides a home for two years or more after individuals graduate from ATH. Graduates focus on education, training, and employment – building their recovery capital. They may also take advantage of aftercare options including individual/group support as needed to strengthen their 'recovery toolbox'.



## 3. RECOVERY SUPPORTIVE HOUSING

TWO YEARS OR MORE



## 4. RECOVERY COMMUNITY CENTRE

**4. Recovery Community Centre** will provide opportunities for people in recovery, friends, and families to support one another, assist with navigating the system, and provide advocacy and fellowship. Low-cost, peer-operated services (including mutual aid groups, peer mentors, social and recreation opportunities) that support continued connections to a positive peer group and a sense of belonging.

Volunteers Tracey and Cynthia have been involved since the program's inception, helping maintain momentum when many thought the project had stalled.

Early in the needs assessment process, they saw firsthand what northern communities have long known: overdose rates per capita are highest in the north, and many individuals must travel far from home, family, and culture to access services not available locally.



When people don't have to keep moving from place to place, everything changes."

What stays with them most is witnessing Isaac's unwavering leadership and advocacy for citizens across northeast BC. Their visit to the communities ARCH will serve – and their meetings with the Peace River Regional District, the North Wind Wellness Centre Board, staff, participants, and families – revealed a shared sense of hope and excitement about better outcomes close to home.

**"Seeing the community's hope made the urgency unmistakable."**

What It Feels Like:  
Tracey Harvey &  
Cynthia Barlow on  
the Journey



# A Major Investment by BMO to Bring ARCH to Life



A strong coalition of public partners (FNHA, CMHC, BC Housing, Northern Health) has supported the vision for ARCH. Now, a significant private contribution is helping bring the model closer to completion. Streethome Foundation recently announced a \$500,000 gift from BMO, delivered over five years, in support of Canada's first integrated Addiction Recovery Community Housing model.

The funding advances the development of a full continuum of care in northeastern British Columbia – one that includes withdrawal management embedded in early recovery housing, treatment housing, recovery supportive housing, and a Recovery Commu-

nity Centre that serves as a hub for connection and peer support. At full operation, ARCH will serve individuals and families across the Peace River Regional District, while also accepting referrals from Vancouver and Prince George – extending its reach across the province.

**“This is a thoughtful, evidence-informed approach that strengthens the wellbeing of individuals and families – and is a community led solution that we’re proud to support.”**

**– James Kitamura, Regional President, BC & Yukon Region, BMO**

## A Message from the CEO

Stable housing, delivered alongside coordinated care, is foundational to recovery.

At Streethome Foundation, we focus on engaging the private sector to take smart risks – enabling the adaptation, integration, and validation of sustainable, evidence-based solutions.

From developing the ARCH business case and providing early seed funding, to aligning partners across sectors, we have seen what sustained collaboration can achieve.

A defining strength of this project is North Wind Wellness Centre's commitment to knowledge

transfer. They are prepared to provide access to building design, partnership approaches, program plans, staffing models, financial frameworks, outcome data, and lessons learned – supporting other communities to adapt and strengthen the model over time.

We are deeply grateful to our partners, including BMO, whose support is helping bring this vision to life.

As ARCH moves toward opening in fall 2026, it stands not only as a critical resource for northern British Columbia, but as a model with relevance far beyond the region.



Rob Turnbull<sup>Ph.D.</sup>  
President & CEO  
Streethome Foundation

T 604.629.2711 ext. 102  
robt@streethome.org



SCAN ME

For more details about the project, scan the QR code. Donate to bridge the final \$175,000 gap and help open ARCH in fall 2026.

